



Capability Statement

“Resile uses the latest evidence-based research to tailor health services for organisations and their workforces. All clients have a direct line of communication with an Occupational Physician with specialist qualifications. We take tremendous pride in our culture of immediacy, accuracy and credibility.”



1300 RESILE
www.resile.com.au
admin@resile.com.au

About Resile

Resile was established in 2015 from the need to create an evidence-based, tailored approach to occupational health to service the needs of organisations and their workforces.

With over 25 years combined experience in delivering services to the workplace, our team led by Dr Robert McCartney and Dr Robin 'Sid' O'Toole assists organisations in all aspects of occupational health.

The Resile difference

The quality of medical staff overseeing clients' needs is the Resile difference.

Our Occupational Physicians are considered leaders in Australian industry and hold specialist qualifications as Fellows of the Australasian Faculty of Occupational and Environmental Medicine within the Royal Australasian College of Physicians.

Clients have a direct line of communication with our Occupational Physicians who oversee and lead a multidisciplinary team tailored to the requirements of each client. Teams can include Occupational Hygienists, Occupational Therapists, Physiotherapists and Occupational Health Nurses.

Occupational health requires flexible and dynamic communicators. Our practitioners are hand-picked for their unique blend of approachable professionalism. We are committed to providing personal attention and direct advice to our clients.

"Resile and Sid's ability to communicate clearly, with a demonstrable solutions-focus sets their services apart from market competitors and is why I continue to seek their advice for our operational environment."

Zach Humphrey, Safety Advisor, GCLIFT, Fulton Hogan



1300 RESILE

www.resile.com.au

admin@resile.com.au

Our services

We deliver services all over Australia and internationally including site visits, scheduled appointments and emergency advice out of hours.

At Resile we pride ourselves on integrating advice into a sustainable framework for organisations and their employees.

We are experienced in:

- Employment Health Assessment;
- Statutory health Assessments across all sectors
- Health Surveillance/Monitoring
- Occupational Hygiene and Preventative Health;
- Medical Management Consultations;
- Acute Medical Management 24/7 – RAMMS line and App;
- Injury Treatment
- Injury Management
- Occupational Physician Consulting;
- On-Site Services.

Resile have a network of over 160 clinics nationally and internationally we have network providers in Europe, North America, Singapore, Hong Kong, South America and South Africa.

“Repeated studies show the faster we respond to an incident, request and/or update, no matter how seemingly trivial, the faster the medical issue is resolved to everyone’s satisfaction.”



1300 RESILE

www.resile.com.au

admin@resile.com.au

Our lead Occupational Physicians

Dr Rob McCartney

Occupational & Environmental Physician

Dr Robert McCartney is a physician who has specialised in the field of Occupational Medicine for over 20 years. His career goal is to maximise the health, wellbeing and productivity of working people.

He is a Fellow of the Australasian Faculty of Occupational and Environmental Medicine with the Royal Australian College of Physicians and a past president of the Australian and New Zealand Society of Occupational Medicine.

He has extensive experience in the prevention, diagnosis and management of occupational injury and illness. This experience combined with his understanding of internal risk context and business imperatives enables him to provide effective and efficient solutions to the employers whilst serving the needs of employees.

Dr McCartney is a Designated Aviation Medical Examiner with the Civil Aviation Safety Authority, a certified Medical Review Officer with the Australasian Medical Review Officers Association and the Medical Review Officer Certification Council, a Nominated Medical Advisor to the Queensland Coal Mine Worker's Health Scheme and consults for Workcover Queensland and other Statutory State Authorities.

"Dr McCartney has an in depth knowledge of occupational and environmental medicine and this has been of great benefit by effectively engaging our people to drive mutually agreeable outcomes on industrially sensitive issues."

Peta Forster, Divisional Manager, Remote Services, Taswater



Dr Robin “Sid” ‘O’Toole

Occupational & Environmental Physician

Dr Sid O’Toole is an Occupational and Environmental Physician who offers expert advice on the risks occurring at the interface of health, work and the environment.

Following his graduation, Dr O’Toole spent several years in the Royal Australian Air Force (RAAF) in full- time active service, acquiring extensive aeromedical experience. Following completion of his tenure, Dr O’Toole commenced civilian Occupation Medicine practice in Brisbane and undertook his training within the Australasian Faculty of Occupational and Environmental Medicine, within the Royal Australasian College of Physicians.

Dr O’Toole has worked across resources, aviation, government and small to medium business sectors. He offers organisations and employees a risk mitigation approach, developed through control of exposures in work and the environment. Dr O’Toole provides an informed, balanced and evidence-based approach to decisions regarding fitness for duty.

Dr O’Toole is a Designated Aviation Medical Examiner with Civil Aviation Safety Authority, a certified Medical Review Officer with the Australasian Medical Review Officers Association and the Medical Review Officer Certification Council, and a Nominated Medical Advisor to the Queensland Coal Industry Worker’s Health Scheme and also consults for Workcover Queensland and other Statutory State Authorities.

Dr O’Toole is a Fellow of the Australasian Faculty of Occupational and Environmental Medicine with the Royal Australian College of Physicians, and a member of the Education Committee of the Australian and New Zealand Society of Occupational Medicine.



Quality and standards

ISO 9001:2015

Resile is currently undergoing initial certification audits for ISO 9001:2015. We look forward to the recognition of meeting this important standard.

Associations and partnerships

We are committed to training the next generation of Occupational Physicians and Resile is an accredited training site for the Royal Australasian College of Physicians for Occupational and Environmental Medicine;

Resile is a member of the Australian Rehabilitation Providers Association.

Resile holds membership of key peak bodies within the occupational health sector as part of our commitment to best practise and upholding of standards of professional practice – Australia and New Zealand Society of Occupational Medicine, Australian Institute Occupational Hygiene and National Safety Council.

Health benefits of good work

Resile is a signatory to the Health Benefits of Good Work consensus statement, by the RACP and AFOEM.



Good work is engaging, fair, respectful and balances job demands, autonomy and job security. Good work accepts the importance of culture and traditional beliefs. It is characterised by safe and healthy work practices and it strikes a balance between the interests of individuals, employers and society. It requires effective change management, clear and realistic performance indicators, matches the work to the individual and uses transparent productivity metrics.

Governance and risk management

Resile works with the best health providers nationally to deliver a high-quality service. We follow an Approved Provider Management Process to ensure services remain high quality, accessible, timely and cost effective. As part of ISO9001:2015 certification our processes are detailed and reviewed regularly.

Privacy and confidentiality

We recognise the importance of protecting the privacy and right of individuals in relation to their personal information. As a medical services provider we understand the sensitive nature of the information we collect. We take our



responsibilities seriously and are bound by the Australian Privacy Principles in the Privacy Act 1988 and any relevant Health Privacy Principles under State Legislation. Our Privacy Policy is available on our website at <https://resile.com.au/privacy-policy/>.



Our track record

Operating since 2015, we are proud to have developed relationships with major organisations in Australia. Some of these include:

- AngloAmerican
- Airbus
- Boeing
- BHP/BMA
- CS Energy
- Caltex
- Contract Resources
- Downer Mining
- Dyno Nobel/Incitec Pivot Limited
- Gladstone Ports
- Fulton Hogan
- Lutheran Services
- Powerlink
- Stanwell
- Sun Metals
- Senex Energy
- Thiess Mining
- Wilmar Sugar
- Yarra Trams
- Aurizon

Feedback from our clients

CATHY LEE, SENIOR WORK HEALTH AND SAFETY ADVISOR, LUTHERAN CARE



As our Chief Medical Advisor, Dr McCartney has taken the trouble to get to know our organisation and understand our industry and the challenges we face. We have received positive feedback from our staff who have been examined by him and we appreciate both his professionalism and expertise. He is extremely approachable, and we do not feel that any question is too silly to ask him.

JANE LEOW, SENIOR HEALTH SERVICES MANAGER, INCITEC PIVOT LIMITED



Dr Sid O'Toole is a Medical Advisor for Incitec Pivot Limited (IPL) including its wholly owned subsidiary Dyno Nobel Asia Pacific Pty Ltd (DNAP). This role carries a high level of responsibility as he is responsible for providing expert medical opinions regarding the health of our employees.

IPL has found Dr O'Toole to be a highly skilled and knowledgeable Occupational and Environmental Physician. Moreover he is an exceptional communicator. Dr O'Toole has invested time to get to know our business and its people. As our Medical Advisor he understands how IPL operates and the risks associated with the tasks our employees perform.



1300 RESILE

www.resile.com.au

admin@resile.com.au

BARB ATKINSON, HEALTH COORDINATOR, HEALTH SAFETY AND ENVIRONMENT, AIRBUS AUSTRALIA PACIFIC



I'm delighted to provide positive feedback for the team at Resile. Recent on-site medicals were performed seamlessly and efficiently in what could have been a challenging situation. Resile's Occupational Health Nurse ensured the process ran to our schedule with little or no lost time.

BOB ROSENBERG, (FORMER) HEALTH SPECIALIST, DOWNER



Dr Rob McCartney has been servicing Downer's occupational health needs for many years, delivering us pre-employment and coal board medicals; management of complex cases; and solutions where we needed specialist occupational physician advice.

When the changes to the Coal Mine Workers Health Scheme occurred, we looked to Rob and the team at Resile to guide us through the confusion and anxiety that the industry was experiencing.

Resile has helped make a complex process smoother and easier for our team and the workers we employ. Downer often refers Rob our complex cases to assess. He excels in succinctly summarising issues and making a clear determination/recommendation. Being able to speak directly to a doctor at Resile has made a big difference to the way we've been able manage cases of injured or ill workers – before they end up getting stuck in the system.

The personal service we get from Rob and Resile is something we value.



1300 RESILE

www.resile.com.au

admin@resile.com.au

Contact us

We're here to partner with you.

CHARLOTTE GROBLER

General Manager

m / 0417 862 467

e / charlotte.grobler@resile.com.au

THEA LYNCH

National Business Development Manager

m / 0421 098 903

e / thea.lynch@resile.com.au

HEAD OFFICE

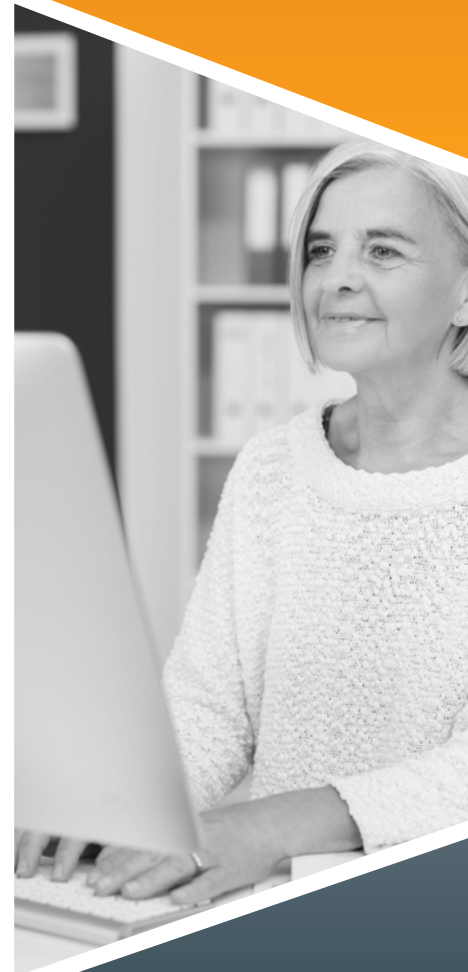
1/112 Fison Ave West

Eagle Farm QLD 4009

PO Box 693 Hamilton Qld 4007

Ph: 1300 737 453

w / resile.com.au



1300 RESILE

www.resile.com.au

admin@resile.com.au